



Campaign at a Glance

Campaign Chairs: Pete and Chris Edwards

President and CEO: Sharon Bucey | 630-945-1787 (m) | Sharon@adaptivesportsconnection.org

Adaptive Sports Connection Mission

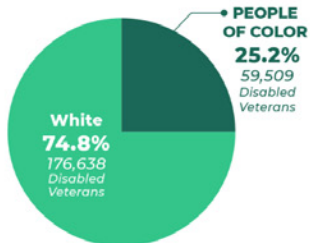
Our mission is to break through limitations with adaptive innovation, ensuring people of all abilities the health benefits, freedom, and sense of belonging from recreation and outdoor experiences.

One in four adults in Ohio and one out of 20 children have a disability. We are breaking down barriers and shredding limitations from an injury, a disease, or a congenital disability.

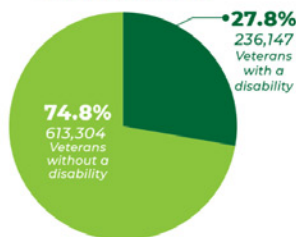
For nearly 30 years, we have been utilizing the power of sports to push what's possible for veterans, children, and adults with disabilities, confronting ignorance, fueling conversation, and inciting action that leads us to a world where everyone's included.

We snow ski, water ski, kayak, cycle, sail, and mountain bike with adaptive equipment designed to match a person's ABILITY – building skills, self-esteem, and independence.

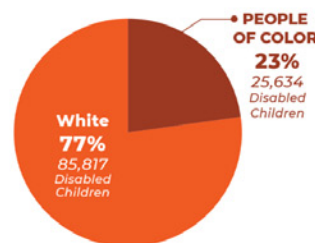
236,147 Veterans with Disabilities in Ohio



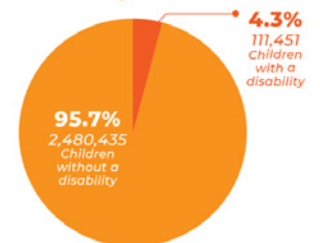
Veterans in Ohio



111,451 Children with Disabilities in Ohio



2,591,886 Children Under the Age of 18 in Ohio



IMPACT FREEDOM • INDEPENDENCE • INCLUSION

6000 Harriott Drive, Powell, OH 43065 | 614.389.3921 | sharon@adaptivesportsconnection.org | AdaptiveSportsConnection.org



Adaptive Sports Connection's Power of Ability Initiative is a comprehensive campaign consisting of:

Adventure & Wellness Lodge – \$10 million (estimate)

A 10,000 square foot (approx.) Adventure and Wellness Lodge located at 6000 Harriott Road in Powell, Ohio. This also includes a small boat house near the water, and a pole barn for equipment storage. The property is owned by the City of Columbus with a 30-year lease renewable lease for \$1 to Adaptive Sports Connection. Adaptive Sports Connection also provides services to children in the Inclusive Adventure Club coordinated through the City's Recreation and Parks Department. The City of Columbus has approved the conceptual designs for the new facility. ASC works with and provides programs for the City of Columbus Recreation and Parks. The estimated cost for the facility is \$10 million. The Adventure & Wellness Lodge is the hub for Adaptive Sports Connection. We also have off-site locations including Alum Creek, Glacier Ridge Metro Parks, Mad River Resort, Snow Trails Resort, and Mt. Brighton Resort in Michigan. In addition, we take our services on the road (think food-truck concept) to meet people where they are in their own neighborhoods, schools, and parks.

The new facility will replace the existing structure, which is deteriorating, unsafe for use by participants, and inadequate for our growing programs and needs of the community.

The new facility will be used for programming, events, our social enterprise Get Out Adventures and serve as a gathering place for our 37 nonprofit community partners. The Lodge is a one-of-kind facility in central Ohio:

- Retreats for Veterans with Disabilities (brain injuries, PTSD, etc.)
- Versatile program area for yoga and movement classes, equipment fittings, and evaluations
- Dedicated space for adaptive bike evaluations, fittings, and learn to ride classes
- Climbing wall
- Equipment storage
- Volunteer training center for our 450 volunteers
- Inviting space for support groups to meet
- Offices for administrative and program staff
- Lodge area for corporate, organization and event retreats, meetings, and gathering space providing an opportunity for earned revenue
- Kitchen
- Outdoor gathering areas
- Accessible locker room and restroom facilities
- Program registration area, concession area
- Storefront for merchandise



Program & Operating Expansion – \$4,500,000

Over the past four years, we have seen a 66% growth in services. We are consistently seeing a 30% increase each year. One in four adults and one in twenty children have a disability in Ohio. The expansion fund will allow us to keep up with the growing demand for our services and continue to impact the lives of more and more children, adults, and veterans with disabilities. We currently provide services to 1400 participants and their families each year, with 50% children. Our services expand to 44 counties in Ohio.

Program and operating expansion includes:

- Program & Staff Expansion for three years
- Adaptive Equipment
- Ability to Break Down Barriers (outreach, transportation, scholarship fund for low-income children and veterans for programming)
- Endowment for the future

Social Enterprise – Get Out Adventures - \$500,000

Get Out Adventures is our social enterprise offering inclusive outdoor experiences to the entire community. The goal of this venture is to:

- Give abled-bodied individuals and those with disabilities the opportunity to enjoy outdoor adventures together
- Build a diverse and inclusive community around the love of the outdoors.
- Sustain and support the work of Adaptive Sports Connection

Get Out Adventures was launched in 2020 as a pilot program. Over two years, we have had 3,056 customers. We are projecting continued revenue growth by increasing kayak sessions, corporate outings, and a membership model.

The comprehensive campaign includes a funding request of \$500,000. The infusion of investment capital will allow the social enterprise to scale quickly and 100% of the net revenue reinvested back into Adaptive Sports Connection to support and sustain the organization as we grow and beyond the Power of Ability Initiative.

The funds will be used for staff, marketing, website/membership management, trailer, trucks, more kayaks, and paddleboards.

Please download and view our campaign brochure for more detailed information about the Power of Ability Initiative. <https://bit.ly/ascpoa>

